

CALURA gloss

LOOKBOOK '24

TAKE YOUR GLOSS GAME TO THE NEXT LEVEL

WITH OUR EXCLUSIVE CALURA GLOSS LOOKBOOK.

"At Oligo Professionnel, we pride ourselves on innovation and excellence, and Calura Gloss exemplifies our commitment to delivering top-quality, vibrant hair colour solutions. Dive into our lookbook to explore the rich, glossy shades and the versatile formulas that are sure to inspire your creativity and meet your clients' diverse needs!"

- Ilan Cohen
President, Oligo Professionnel



In the world of hair colour, understanding the nuances of every shade and the science behind each formula can make all the difference. Our comprehensive guide offers over 100 meticulously crafted formulas, ensuring you have the knowledge to achieve flawless results with Calura Gloss every time.

WHAT YOU'LL GAIN:

Detailed Formulas, Expert Insights, Testimonials.

CALURA gloss



DEMI -PERMANENT LIQUID HAIR COLOUR

Hydrolyzed Vegetable Proteins • Acai Fruit Extract • Hyaluronic Acid

HYBRID TECHNOLOGY

LONGEVITY

TONING 3-10 MINUTES

PLEASANT FRAGRANCE

WHITE BLENDING UP TO 50%

GLOSS MEN

MIXERS

NO ANIMAL DERIVED INGREDIENTS & GLUTEN-FREE



@JUAHNN

DISCOVER 100+ LOOKS

BLONDES

Discover the luminous and versatile shades of Calura Gloss Blondes. From soft, natural tones to warm, eye-catching hues, these blondes are designed to illuminate and enhance.

BRUNETTES

Explore the rich, deep, and luxurious shades of Calura Gloss Brunettes. Perfect for adding depth and dimension, these colours offer a sophisticated, timeless appeal.

REDS

Unleash the bold and fiery spirit of Calura Gloss Reds. From vibrant, intense reds to subtle, warm tones, these shades are sure to make a statement.

FASHION

Step into the world of creativity with Calura Gloss Fashion shades. These bold, vibrant colours are perfect for those looking to make a unique and stylish statement.

TRENDING NOW

Stay ahead of the curve with the latest shades trending in the world of hair colour. Calura Gloss Trending Now features the most current and in-demand shades for a fresh, modern look.



@CLAUDIAPAGEARTISTECOIFFEUSE



TRENDING NOW



BRUNETTES



BLONDES



REDS



FASHION

LOOKS & FORMULAS

Each look and formula in this lookbook has been thoughtfully created by a diverse group of talented artists to inspire your creativity. Remember, everyone's hair is unique, and results will vary based on your starting point. Enjoy experimenting and finding the perfect shades for you and your clients.

**Please note that all images in this lookbook are raw and unedited, showcasing the true vibrancy and tones of our hair colours without any enhancements.*



@JUAHNN



@HAIRBYMEGANPEREZ



@SAVS_SCISSORS

BLONDES: COOL

Embrace the icy, elegant tones of Cool Blondes. Perfect for creating a sophisticated, modern look with a touch of frost.

**@JADEPOZO**

Global: 10ml 10-6/V + 10ml 10-12/10AI

Developer: 7 Vol. Lotion

**@JADEBEAUTYCO**

Zone 1: 15ml 8 Neutral + 15ml 8-36/8GV

Zone 2: 30ml 10 Neutral + 15ml Clear

Developer: 7 Vol. Lotion for both

**@HAIRXBRE**

Global: 30ml 10-36/10GV + 10ml 10-6/10V

Developer: 7 Vol. Lotion

**@MARISA.ARTISTRYHAIRLOUNGE**

Global: 35ml 10-12/10AI + 35ml 10-36/10GV + 10ml Clear

Developer: 7 Vol. Lotion



@HAILEYRAWNXHAIRSTYLIST

Global: 15ml 9-12/9AI + 15ml 10-12/10AI + 15ml 10 Neutral
Developer: 7 Vol. Lotion



@SAVS_SCISSORS

Global: 15ml 9-12/9AI + 15ml 10-12/10AI + 15ml 10 Neutral
Developer: 7 Vol. Lotion



@HAIRBYABLONDE

Zone 1: 7 Neutral

Global: 30ml 9-32/9GI + 30ml Neutral Brown

Developer: 7 Vol. Lotion



@HAIRBYABLONDE

Zone 1: 15ml 9 Neutral + 15ml 9-12/9AI

Global: 30ml Clear + 30ml 10-6/10V

Developer: 7 Vol. Lotion

WHAT IS YOUR FAV WAY TO USE CALURA GLOSS?

"My favorite way to use Calura Gloss, is definitely after a lightening service to tone. Because it has the benefits of both alkaline and acidic, I love that it balances my clients pH while also conditioning the hair. That combination leaves them with shiny, healthy hair."

WHAT IS YOUR FAV CALURA GLOSS SHADE?

"My favorite Calura Gloss is definitely 9-12/9AI with a smidge of 9-3/9G, it creates the most beautiful, shiny, bright blonde."

WHAT IS YOUR FLAVOUR OF THE MONTH FORMULA?

"My flavor of the month formula, although I am a blonde specialist, I do love my brunettes! So it would have to be 7 Neutral + 8-34/8GK + 7-1/7A. It creates a bronze type of brown. Not quite copper, but not too muted either. It's a perfect rich shade for all skin tones."

- Atalaya Figueroa

**@THECUTTINGROOMSALON306**

Global: 45ml 10-12/10AI + 15ml 9-36/9GV

Developer: 7 Vol. Lotion

**@HAIRBYABLONDE**

Global: 25ml 9-12/9AI + 5ml 10-36/10GV

Developer: 7 Vol. Lotion

**@SAVS_SCISSORS**

Global: 45 ml 10-6/10V + 15ml 10-36/10GV

Developer: 7 Vol. Lotion



@JUAHNN

Zone 1: 15ml 7-13/7AG + 15ml 7-1/7A

Zone 2: 15ml 10-12/10AI + 15 ml 10-6/10V + 15ml Clear

Developer: 7 Vol. Lotion



@HAIRBYMEGANPEREZ

Global: 10-6/10V

Developer: 7 Vol. Lotion



@ALI_THEARTIST



@JADEBEAUTYCO

BLONDES: BEIGE

Discover the understated beauty of Beige Blondes. These shades offer a soft, natural elegance that complement any style.

**@ITSMRJLADNER**

Zone 1: 30ml 6 Intense Neutral

Global: 10ml 10 Neutral + 10ml 9-6/9V + 5ml 9-3/9G

Developer: 7 Vol. Lotion

**@ITSMRJLADNER**

Zone 1: 30ml 8 Neutral Brown + 5ml 8-36/8GV

Global: 15ml 10-36/10GV + 15ml 10 Neutral

Developer: 7 Vol. Lotion

**@ITSMRJLADNER**

Zone 1: 20ml 7 Neutral + 10ml 7-12/7AI

Global: 20ml 10-36/10GV + 10ml 10 Neutral

Developer: 7 Vol. Lotion

**@JUAHNN**

Zone 1: 10ml 7-1/7A + 20ml 7 Neutral

Zone 2: 15ml 10-12/AI + 15ml 10-36/GV + 15ml 10-6/10V

Developer: Zone 1 - 7 Vol. Cream & Zone 2 - 7 Vol. Lotion

**@JADEBEAUTYCO**

Zone 1: 15ml 9 neutral + 15ml 9-12/9AI
Global: 30ml Clear + 30ml 10-6/10V
Developer: 7 Vol. Lotion

**@ALI_THEARTIST**

Zone 1: 6 Neutral + 7-12/7AI
Zone 2: Face frame 30ml 10 Neutral Brown + 3ml 8-4/8K
Developer: 7 Vol. Lotion



@JADEBEAUTYCO



@COLORME.KASSIDY



@ALI_THEARTIST

BLONDES: WARM

Experience the inviting warmth of Warm Blondes. These shades will bring a sunny, golden glow to your guests' hair.

**@REBECCATAYLORHAIR**

Global: 30ml 9-36/9GV + 30ml 8-32/8GI

Developer: 7 Vol. Lotion

**@ITSMRJLADNER**

Zone 1: 20ml 8 Neutral Brown + 10ml 7-3/7G

Global: 20ml 10 Neutral + 10ml 10-6/10V + 5ml 9-3/9G

Developer: 7 Vol. Cream new growth, 7 Vol. Lotion ends

**@ITSMRJLADNER**

Zone 1: 30ml 8-34/8GK + 10ml 7 Neutral Brown

Global: 20ml 9-3/9G + 10ml 9 Neutral

Developer: 7 Vol. Lotion

**@PIGMENTHAIRCO**

Global: 20ml 10 Neutral Brown + 10ml 10-36/10GV + 10ml clear
Developer: 7 Vol. Lotion

**@JWHAIRSTUDIO_**

Global: 23ml 9 Neutral Brown + 6ml 8-34/8GK
Developer: 7 Vol. Lotion

**@LUXBLONDESBYMARISSA_**

Global: 30ml 8-32/8GI + 30ml 9-66/9VV
Developer: 7 Vol. Lotion

**@ELEVATEDBEAUTIESS**

Global: 25ml 10-6/10V + 5ml 10 Neutral + 10ml 10-36/10GV
Developer: 7 Vol. Lotion

**@ITSMRJLADNER**

Zone 1: 4 Intense Neutral

Global: 20ml 8-13/8AG + 10ml 7-12/7AI

Developer: 7 Vol. Lotion

**WHAT IS YOUR FAV WAY TO USE CALURA GLOSS?**

"Calura Gloss is my co-pilot in everything I do behind the chair as a colourist. It's a extension of my hand for all my guests, from customizing my formulation for tonal expression, low lighting or maximizing hydration with a stand alone treatment, Calura Gloss is there every step of the way."

WHAT IS YOUR FAV CALURA GLOSS SHADE?

"My go to formula for a reflective beige is 8-34/8GK + 8-36/8GV."

WHAT IS YOUR FLAVOUR OF THE MONTH FORMULA?

"My flavor of the month formula is crème brûlée 20ml 10 Neutral Brown + 10ml 9-3/9G + 2ml 0-33/0GG."

- J Ladner

**@ITSMRJLADNER**

Zone 1: 20ml 8 Neutral Brown + 10ml 7-3/7G

Global: 20ml 10 Neutral + 10ml 10-6/10V

+ 5ml 9-3/9G

Developer: 7 Vol. Lotion for both

**@JADEBEAUTYCO**

Zone 1: 7 Neutral

Global: 30ml 9-32/9GI + 30ml 10 Neutral Brown

Developer: 7 Vol. Lotion

**@ALI_THEARTIST**

Zone 1: 15ml 6 Neutral + 15ml 8-12/8AI

Global: 25ml 10 Neutral Brown + 25ml 10 Neutral + 5ml 0-16/OAV

Developer: 7 Vol. Lotion for both

**@COLORME.KASSIDY**

Zone 1: 15ml 4 Neutral Brown + 15ml 6-32/GI

Zone 2: 30ml 8 Neutral Brown + 7ml 9-32/9GI + 7ml 9-3/9G

Zone 3: 10 Neutral Brown + 7ml 9-32/GI + 7ml 9-3/G

Developer: 13 Vol. new growth, 7 Vol. Lotion ends



@MOYO_IJOMA



@AJROOSMABEAUTY



@HAILEYRAWNXHAIRSTYLIST

BLONDES: SANDY

Get the effortless, beachy vibe with Sandy Blondes. These shades are perfect for a relaxed, sun-kissed appearance.

**@HAIRBYKINGDOM**

Zone 1: 7ml 7-13/7AG + 5ml 7 Neutral + 2ml 7 Neutral Brown
+ 2g 9-6/9V

Global: 10ml 9-12/9AI + 7ml 9-3/9G 10ml 9-6/9V + 3ml 9-36/9GV

Developer: 7 Vol. Cream

**@HAILEYRAWNXHAIRSTYLIST**

Zone 1: 15ml 8 Neutral + 15ml 8-12/8AI

Global: 15ml 10 Neutral + 15ml 10-36/10GV + 15ml 9-12/9AI

Developer: 7 Vol. Lotion

**@JADEBEAUTYCO**

Zone 1: 3 Neutral Brown

Zone 2: 7-13/7AG

Money Piece: 30ml 8-36/8GV + 30ml 9-12/9AI

Developer: 7 Vol. Lotion

**@BACKWOODSBEAUTY2022**

Global: 45ml 9-12/9AI + 15ml 9-36/9GV

Developer: 7 Vol. Lotion

**@MOYO_IJOMA**

Global: 15ml 9-11/9AA + 15ml 10-6/10V + 3ml 9-36/9GV
Lowlight: 18ml 7-13/AG + 12ml 8 Neutral
Developer: 7 Vol. Lotion

**@JC_HAIROLOGIST**

Global: 10ml 8 Neutral + 20ml 9-12/9AI
Developer: 7 Vol. Lotion

**@AJROOSMABEAUTY**

Zone 1: 8ml 7 Neutral + 2ml 6-1/6A
Global: 25ml 8 Neutral + 10ml 9 Neutral
Developer: 7 Vol. Lotion

**@ELEVATEDBEAUTIESS**

Zone 1: 20ml 6-34/6GK + 20ml 5 Neutral
Global: 20ml 8-34/8GK + 10ml 9-32/9GI
Developer: 7 Vol. Lotion

**@THEUNORTHODOXSTYLIST**

Zone 1: 5ml 6 Neutral + 5ml 6-1/6A
Zone 2: 10ml 10 Neutral + 10ml 10-36/10GV + 10ml 10-12/10AI
Developer: 7 Vol. Cream

**@ALYSSANICOLETT**

Global: 30ml 9-3/9G + 15ml 0-33/0GG + 5ml 9-36/9GV
Developer: 7 Vol. Lotion



REBECCA TAYLOR

Global Calura Colour Ambassador
@rebeccataylorhair

oligo
PROFESSIONAL



@REBECCATAYLORHAIR

Zone 1: 30ml 10-36/10GV + 15ml 8-12/8AI

Money piece: Same formula, done last

Developer: 7 Vol. Lotion



@REBECCATAYLORHAIR

Global: 35ml 8-4/8K + 10ml 7-5/7R + 5ml 0-44/OKK
+ 5ml 0-55/ORR

Lowlight: 7-318/7GAB + 8-36/8GV

Developer: 7 Vol. Lotion

WHAT IS YOUR FAV WAY TO USE CALURA GLOSS?
"Blonde toning, lowlights and creative hues using the mixers"

WHAT IS YOUR FAV CALURA GLOSS SHADE?
"9-31/9GI, 8-43/8KG, 10-6/10V"

WHAT IS YOUR FLAVOUR OF THE MONTH FORMULA?
"Metallic pink! 30ml 10-6/10V + 2ml 0-55/ORR + 1ml 0-66/0VV + 1ml 0-44/OKK"

- Rebecca Taylor

**@REBECCATAYLORHAIR**

Zone 1: 30ml 10-36/10GV + 15ml 8-12/8AI
Money piece: Same formula, done last
Developer: 7 Vol. Lotion

**@REBECCATAYLORHAIR**

Global: 30ml 10 Neutral + 15ml 8-13/8AG + 10ml 7-6/7V
Developer: 7 Vol. Lotion



@BRIDESBRAIDSANDBALAYAGE



@KWHAIR



@HAIRBYKINGDOM

BLONDES: PLATINUM

Shine bright with the striking, high impact look of Platinum Blondes. This bold shade is sure to turn heads.

**@TIMTRIMSHAIR**

Global: 30ml 10-12/10AI + 1ml 7-5/7R

Developer: 7 Vol. Lotion

**@LUXBLONDESBYMARISSA_**

Global: 15ml 10-12/10AI + 7ml Clear

Developer: 7 Vol. Lotion

**@HAIRBYKINGDOM**

Zone 1: 7ml 8-13/8AG + 5ml 8 Neutral + 2ml 9-6/9V

Global: 10ml 9-12/9AI + 2ml 9-3/9G + 3ml 9-36/9GV

Developer: 7 Vol. Lotion for both

**@MARINA.HAIRSTYLIST**

Global: 9-12/9AI

Developer: 7 Vol. Lotion

**@BRIDESBRAIDSANDBALAYAGE**

Global: 20ml 10-36/10GV + 10ml 9-32/9GI

Developer: 7 Vol. Lotion

**@TIMTRIMSHAIR**

Global: 10ml 10 Neutral + 20ml 10-6/10V

Developer: 7 Vol. Lotion



@AAASHLEEE



@GCANDCO_



@THEUNORTHODOXSTYLIST

BRUNETTES: COOL

Dive into the rich, cool depths of Cool Brunettes. These shades offer a sleek, polished look with a hint of mystery.

**@AAASHLEEE**

Zone 1: 20ml 4 Neutral + 10ml 3 Neutral

Global: 8-32/8GI

Developer: Zone 1 - 7 Vol. Cream & Global 7 Vol. Lotion

**@THEUNORTHODOXSTYLIST**

Global: 15ml 8-3/8G + 15ml 8-1/8A + 15ml 8-36/8GV

Lowlight: 20ml 7 Neutral + 20ml 8-36/GV

Developer: 7 Vol. Cream

**@AAASHLEEE**

Zone 1: 5 Intense Neutral

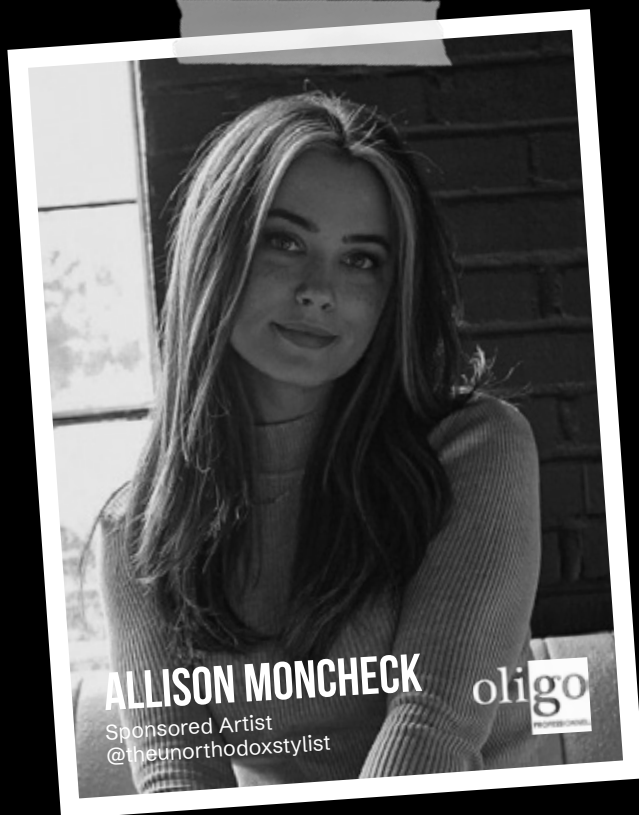
Global: 20ml 7 Neutral Brown + 10ml 7-32/7GI

Developer: 7 Vol. Lotion

**@GCANDCO_**

Global: 20ml 5 Neutral + 10ml 6 Neutral Brown

Developer: 7 Vol. Lotion



@THEUNORTHODOXSTYLIST

Zone 1: 7ml 6 Neutral + 7ml 6-1/6A

Global: 7ml 8 Neutral Brown + 15ml 9 Neutral Brown
+ 15ml 9-32/9GI

Developer: 7 Vol. Lotion for both



@THEUNORTHODOXSTYLIST

Global: 15ml 8-3/8G + 15ml 8-1/8A + 15ml 8-36/8GV

Lowlight: 20ml 7 Neutral + 20ml 8-36/GV

Developer: 7 Vol. Cream

WHAT IS YOUR FAV WAY TO USE CALURA GLOSS?

"My fav way to use Calura Gloss is by toning my clients to the perfect shade while ensuring their result with incredible shine and longevity."

WHAT IS YOUR FAV CALURA GLOSS SHADE?

"The 13/AG series"

WHAT IS YOUR FLAVOUR OF THE MONTH FORMULA?

"15ml 9-32/9GI+ 15ml 9-36/9GV+ 8ml 8-34/8GK for the perfect Beige"

- Allison Moncheck



@JUAHNN



@THENEWENGLANDSTYLIST



@COLOREDBYKARLA

BRUNETTES: WARM

Enjoy the inviting, rich tones of Warm Brunettes. Perfect for adding depth and dimension with a touch of warmth.

**@JUAHNN**

Zone 1: 15ml 4 Intense Neutral + 15ml 3 Neutral Brown
Zone 2: 15ml 6-34/6GK + 15ml 6-32/6GI + 15ml 6-13/6AG
Developer: Zone 1 - 7 Vol. Cream & Zone 2 - 7 Vol. Lotion

**@THENEWENGLANDSTYLIST**

Global: 15ml 8 Neutral + 20ml 8-36/8GV
Developer: 7 Vol. Lotion

**@AAASHLEEE**

Global: 30ml 5 Neutral Brown + 7ml 6-34/6GK + 2ml 3-5/3R
Developer: 7 Vol. Lotion

**@SHERRYLYNNSHEARS**

Global: 20ml 7 Neutral + 15ml 7-12/7AI
Developer: 7 Vol. Lotion

**@CHAEEL_00**

Zone 1: 15ml 5 Neutral Brown + 15ml 5-3/5G
Zone 2 & 3: 5ml 9 Neutral Brown + 5ml 9-3/9G + 5ml 9-36/9GV
+ 5ml 7 Neutral Brown
Developer: 7 Vol. Lotion

**@COLOREDBYKARLA**

Global: 8-13/8AG
Developer: 7 Vol. Lotion



@JUAHNN

Zone 1: 10ml 7-1/7A + 20ml 7Neutral

Zone 2: 15ml 10-12/AI + 15ml 10-36/GV + 15ml 10-6/10V

Developer: Zone 1 - 7 Vol. Cream & Zone 2 - 7 Vol. Lotion



WHAT IS YOUR FAV WAY TO USE CALURA GLOSS?

"My favorite way to use CALURA GLOSS is after a foiling session. For root shadows, I mix the formula with 7 VOL CREAM DEVELOPER. Its thicker consistency ensures it stays at the roots without bleeding into the rest of the hair. For mid-lengths to ends, I blend CALURA GLOSS with 7 Vol. Lotion DEVELOPER, as its consistency glides smoothly through the hair. I'm absolutely obsessed with this method!"

WHAT IS YOUR FAV CALURA GLOSS SHADE?

"My go-to CALURA GLOSS series is 34/GK. Its versatility allows me to mix it with any other shade, creating magic every time. On its own, it's stunning, making it perfect for both blonde and brunette transformations."

WHAT IS YOUR FLAVOUR OF THE MONTH FORMULA?

"30ml 8-34/8GK + 30ml 8N + 7 vol: This blend beautifully balances yellow and orange tones, resulting in a gorgeous caramel dark blonde."

- Juan Torres



@JUAHNN

Zone 1: 15ml 4 Intense Neutral + 15ml 3 Neutral Brown

Zone 2: 15ml 6-34/6GK + 15ml 6-32/6GI

+ 15ml 6-13/6AG

Developer: Zone 1 - 7 Vol. Cream & Zone 2 - 7 Vol. Lotion

**@AAASHLEEE**

Global: 8 Neutral Brown

Lowlight: 5 Neutral

Developer: 7 Vol. Lotion

**@STYLES_BY_SIERRAC**

Zone 1: 4 Neutral Brown

Zone 2: 15ml 6-1/6A + 15ml 7-12/7AI

Developer: 7 Vol. Lotion

**@AAASHLEEE**

Zone 1: 20ml 6 Neutral Brown + 10ml 7 Neutral Brown

Global: 10ml 7-3/7G + 20ml 8-34/8GK

Lowlight: 15ml 7-3/7G + 15ml 7 Neutral Brown

Developer: Zone 1 + Lowlights 7 Vol. Cream, Global 7 Vol. Lotion



@THEUNORTHODOXSTYLIST



@NICEHAIRBYRO

BRUNETTES: MUSHROOMS

Discover the earthy, neutral tones of Mushroom Brunettes. These shades provide a modern, subtle twist on classic brown.

**@THEUNORTHODOXSTYLIST**

Zone 1: 7ml 6 Neutral + 7ml 6-1/6A

Global: 7ml 8 Neutral Brown + 15ml 9 Neutral Brown + 15ml 9-32/9GI

Developer: 7 Vol. Lotion for both

**@NICEHAIRBYRO**

Zone 1: 6 Neutral

Global: 20ml 7 Neutral Brown + 10ml 7-3/7G

Developer: 7 Vol. Lotion

**@ITSMRJLADNER**

Zone 1: 30ml 6-13/6AG + 10ml 5 Neutral Brown

Global: 20ml 8-13/8AG + 10ml 5 Neutral Brown

Developer: 7 Vol. Lotion



@ALI_THEARTIST



@JADEBEAUTYCO



@SIMONSAYSHAIR

BRUNETTES: BRONDES

Blend the best of both worlds with Brondes. This versatile trend combines the depth of brunettes with the brightness of blondes.

**@ALI_THEARTIST**

Zone 1: 15ml 6 Neutral + 15 ml 6-1/6A

Global: 15ml 10 Neutral + 10ml 9-36/9GV + 10ml 9-12/9AI

Developer: 7 Vol. lotion

**@SIMONSSAYSHAIR**

Zone 1: 20ml 5 Neutral + 10ml 5-1/5A 13vol

Global: 10ml 8 Neutral Brown + 10ml 9 Neutral Brown +
7ml 8-13/AG + 3ml 8-32/GI

Developer: 7 Vol. Lotion, 13 Vol. in Zone 1

**@ALI_THEARTIST**

Zone 1: 20ml 5 Neutral + 10ml 6-13/6AG

Global: 25ml 9 Neutral + 5ml 9-12/9AI

Developer: 7 Vol. Lotion

**@HAIRBYMEGANPEREZ**

Global: 15ml 8 Neutral + 15ml 9 Neutral

Developer: 7 Vol. Lotion

**@JUAHNN**

Global: 20ml 10 Neutral + 1 g 0-44/0KK

Developer: 7 Vol. Lotion

**@ITSMRJLADNER**

Zone 1: 4 Intense Neutral

Global: 20ml 8-13/8AG + 10ml 7-12/7AI

Developer: 7 Vol. Lotion

**@ITSMRJLADNER**

Zone 1: 20ml 5 neutral

Zone 2: 10ml 9 Neutral + 10ml 9-3/9G + 10ml 9-6/9V

Developer: 7 Vol. Lotion

**@ITSMRJLADNER**

Zone 1: 20ml 6-31/6AG + 10ml 4 Neutral
Global: 20ml 8-13/8AG + 10ml 7 Neutral brown
Developer: 7 Vol. Lotion

**@ALI_THEARTIST**

Zone 1: 15ml 6 Neutral + 15ml 6-1/6A
Global: 25ml 10 Neutral + 25ml 9-36/9GV + 5ml 0-16/OAV
Developer: 7 Vol. Lotion

**@JADEBEAUTYCO**

Zone 1: 6-13/6AG
Global: 30ml 9-36/9GV + 30ml 8-36/8GV
Developer: 7 Vol. Lotion



@REBECCATAYLORHAIR



@PUREANDHEALTHYHAIRSalON



@GLAMOUR_BY_SKY

REDS: TRUE REDS

Make a bold statement with the vibrant, passionate tones of Reds. Perfect for those who want to stand out.

**@JILLDOESMYHAIR**

Global: 28ml 6-5/6R + 2ml 0-55/0RR

Developer: 7 Vol. Lotion

**@GLAMOUR_BY_SKY**

Global: 20ml 7-5/7R + 10ml 6-5/6R + 10ml 0-55/0RR

Developer: 7 Vol. Lotion

**@PUREANDHEALTHYHAIRSalON**

Global: 7-5/7R + 0-55/0RR

Developer: 7 Vol. Lotion

**@DESIGNED_BYDAKODA**

Global: 45ml 6-5/6R + 10ml 3-5/3R + 1ml 0-55/0RR

Developer: 7 Vol. Lotion



@MISAEAPONTEHAIR

Global: 30ml 8-45/8KR + 15ml 0-33/0GG
Developer: 7 Vol. Cream



WHAT IS YOUR FAV WAY TO USE CALURA GLOSS?

"The Calura Gloss Neutral Brown series is my go-to for lowlights and as a filler for color-back on pale Blondes."

WHAT IS YOUR FAV CALURA GLOSS SHADE?

"Calura Gloss 10-12/10AI & 10-36/10GV in equal parts is my go-to Toner for yellow control, while creating a cool Taupe-Beige. Calura Gloss 13 Volume developer is used when hair is overly porous."

WHAT IS YOUR FLAVOUR OF THE MONTH FORMULA?

"I have 2 current faves! For my Brunettes; Calura Gloss 30ml 6 Neutral Brown + 2ml 0-55/ORR + 3ml 0-66/OVV with equal parts Calura Gloss 7 Volume - Creates a fabulous Bordeaux finish. For my Copper clients; Calura Gloss 15ml 0-33/0GG & 30ml Clear with equal parts Calura Gloss 7 Volume - for a sunlit Copper surface overlay."

— Misael Aponte



@MISAEAPONTEHAIR

Global: 40ml 7-5/7R + 15ml 0-55/ORR
+ 5ml 0-66/OVV
Developer: 13 Vol.

**@PUREANDHEALTHYHAIRSalON**

Global: 25ml 7-5/7R + 5ml 7-3/7G

Developer: 7 Vol. Lotion

**@MISAEAPONTEART**

Global: 40ml 7-5/7R + 15ml 0-55/ORR + 5ml 0-66/OVV

Developer: 7 Vol. Cream

**@REBECCATAYLORHAIR**

Global: 45ml 6-5/6R + 10ml 0-55/ORR

Developer: 7 Vol. Lotion

**@JC_HAIROLOGIST**

Global: 60ml 7-45/7KR + 30ml 6-5/6R

Developer: 7 Vol. Lotion



@TMELONG



@CLAUDIAPAGEARTISTECOIFFEUSE



@CLAUDIAPAGEARTISTECOIFFURE

REDS: BOLD COPPERS

Turn up the heat with Bold Coppers. These intense, fiery shades are sure to make a lasting impression.

**@REBECCATAYLORHAIR**

Global: 35ml 8-4/8K + 10ml 7-5/7R + 5ml 0-44/0KK
+ 5ml 0-55/0RR
Developer: 7 Vol. Lotion

**@CLAUDIAPAGEARTISTECOIFFEUSE**

Global: 15ml 8-43/8KG + 10ml 7-4/7K + 5ml 0-44/0KK
Developer: 7 Vol. Lotion

**@CLAUDIAPAGEARTISTECOIFFEUSE**

Global: 15ml 7-4/7K + 5ml 8-34/8GK + 10ml 0-44/0KK
+ 5ml 9-46/9KV
Developer: 7 Vol. Lotion

**@TMELONG**

Global: 7-4/1K + 7-5/7R + 0-44/0KK
Developer: 7 Vol. Lotion



@HAIRBYMEGANPEREZ

Global: 15ml 6-43/6KG + 25ml 8-43/8KG
Developer: 7 Vol. Lotion



WHAT IS YOUR FAV WAY TO USE CALURA GLOSS?

"I love using Calura Gloss for toning after blonding or to refresh lived in looks."

WHAT IS YOUR FAV CALURA GLOSS SHADE?

"My go to is always the GV series."

WHAT IS YOUR FLAVOUR OF THE MONTH FORMULA?

"9-3/9G + 9 Neutral Brown combo for a buttery warm blonde."

- Megan Perez



@HAIRBYMEGANPEREZ

Global: 15ml 9-6/9V + 25ml 10-36/10GV
Developer: 7 Vol. Lotion



@HAIRBYMEGANPEREZ



@CLAUDIAPAGEARTISTECOIFFEUSE

REDS: RICH COPPER

Enjoy the luxurious, deep tones of Rich Coppers. These shades add a sophisticated, elegant touch to your look.

**RED/COPPER**

Global: 6-43/6KG + 8-43/8KG

Developer: 7 Vol. Lotion

@HAIRBYMEGANPEREZ

**@CLAUDIAPAGEARTISTECOIFFEUSE**

Zone 1: 20ml 7-4/7K + 10ml 8-4/8K + 2g 0-55/ORR

Global: 30ml 7-45/7KR + 15ml 7-44/7KK 20vol

Developer: 7 Vol. Lotion

**@CLAUDIAPAGEARTISTECOIFFEUSE**

Global: 25ml 7-4/7K + 15ml 8-34/8GK + 5ml Clear + 5ml

0-33/0GG + 2ml 0-44/0KK

Developer: 7 Vol. Lotion

**@CLAUDIAPAGEARTISTECOIFFEUSE**

Global: 12ml 9-3/9G +12ml 8-4/8K + 5ml 10 Neutral Brown
+ 10ml Clear + 10ml 8-34/8GK
Developer: 7 Vol. Lotion

**@JILLDOESMYHAIR**

Global: 29ml 6-5/6R + 1ml 0-55/0RR
Developer: 7 Vol. Lotion



@JESSPURMALDESIGNS



@DROPDYEDGORGEOUS



@ALI_THEARTIST

REDS: NATURAL COPPERS

Embrace the subtle, warm beauty of Natural Coppers. Perfect for a more understated, natural appearance.

**@ALI_THEARTIST**

Zone 1: Face frame 10 Neutral Brown
Global: 40ml 10 neutral + 10ml 8-34/8GK
Developer: 7 Vol. Lotion

@ALI_THEARTIST**@JESSPURMALDESIGNS**

Zone 1: 30ml 8-34/8GK + 30ml 7-4/7K
Global: 100ml 9-3/9G + 10ml 0-44/0KK + 10ml 0-33/0GG
Developer: 7 Vol. Lotion

**@DROPDYEDGORGEOUS**

Global: 9-3/9G
Developer: 7 Vol. Lotion



@AAASHLEEE



@CLAUDIAPAGEARTISTECOIFFEUSE



@ALI_THEARTIST

@ALI_THEARTIST

REDS: ROSE GOLD/STRAWBERRY BLONDE

Add a touch of whimsy with Rose Gold and Strawberry Blonde. These playful, warm shades are perfect for a unique, trendy look.


@CLAUDIAPAGEARTISTECOIFFEUSE

Zone 1: 15ml 7 Neutral + 10ml 9 Neutral + 2ml 8-36/GV
+ 1ml 0-55/RR

Global: 10 ml 9-3/9G + 1ml 0-44/0KK + 10ml 9-36/9GV +
2ml 0-55/0RR

Developer: 7 Vol. Lotion


@CLAUDIAPAGEARTISTECOIFFEUSE

Global: 12ml 9-3/9G + 12ml 8-4/8K + 5ml 10 Neutral Brown
+ 10ml Clear + 10ml 8-34/8GK

Developer: 7 Vol. Lotion


@AAASHLEEE

Global: 20ml 8-43/8KG + 20ml 8-3/8G

Developer: 7 Vol. Lotion


@REBECCATAYLORHAIR

Global: 35ml 8-4/8K + 10ml 7-5/7R + 5ml 0-44/0KK
+ 5ml 0-55/0RR

Developer: 7 Vol. Lotion



CLAUDIA PAGÉ

Educator & Ambassador
@claudiapageartistecoiffeuse



@CLAUDIAPAGEARTISTECOIFFEUSE

Zone 1: Calura Permanent Shine

Global: 12ml 9-3/9G + 12ml 8-4/8K + 5ml 10 Neutral Brown +
10ml Clear + 10ml 8-34/8GK

Developer: 7 Vol. Lotion



@CLAUDIAPAGEARTISTECOIFFEUSE

Global: 15ml 8-43/8KG + 10ml 7-4/7K
+ 5ml 0-44/0KK

Developer: 7 Vol. Lotion

WHAT IS YOUR FAV WAY TO USE CALURA GLOSS?

"J'adore utiliser Calura gloss pour rafraîchir les longueurs, en particulier mes clientes cuivrés et pour nuancer les blonds !"

WHAT IS YOUR FAV CALURA GLOSS SHADE?

"J'adore la série des NB pour les mèches tons sur ton, les caramels et aussi pour les blondes. Ils sont très polyvalents pour plusieurs niveaux."

WHAT IS YOUR FLAVOUR OF THE MONTH FORMULA?

"Pour un effet blond vénitien un mélange de 9-3/9G + 8-43/8KG + 9 Neutre Brun en mélange exemple 10ml 9-3/9G + 10 ml 8-43/8KG et 5ml Neutre Brun."

- *Claudia Pagé*

**@AAASHLEEE**

Global: 20ml 8-4/K + 20ml 8-43/KG
Developer: 7 Vol. Lotion

**@ALI_THEARTIST**

Zone 1: 20ml 7 Neutral + 20ml 6-34/6GK
Zone 2: Faceframe 30ml 10 Neutral Brown + 10ml 8-34/8GK
Global: 10ml 9 Neutral + 20ml 8-34/8GK
Developer: 7 Vol. Lotion



@REBECCATAYLORHAIR



@COLOUR.JADE



@KERRKREATIVE

FASHION

Step into a world of creativity and bold expression with Fashion shades. These vibrant, unconventional hues are perfect for making a unique, stylish statement.

**@JESSPURMALDESIGNS**

Global: 20ml 10-12/10AI + 1ml 0-66/0VV + 40ml clear
Developer: 7 Vol. Lotion

**@KERRKREATIVE**

Global: 40ml 9-36/9GV + 5ml 7-5/7R + 2ml 0-55/0RR
Developer: 7 Vol. Lotion

**@REBECCATAYLORHAIR**

Zone 1: 10-6/10V
Zone 3: Copper 20ml 0-44/0KK + 20ml 10 Neutral
Developer: 7 Vol. Lotion Zone 1, 2 and 3

**@KERRKREATIVE**

Zone 1: 10ml 5-6/5V + 10ml 8-11/8AA + 5ml 0-11/0AA + 10ml clear
Zone 2: 10ml 5-6/5V + 10ml 8-11/8AA + 5ml 0-11/0AA + 20g Clear
Global: 7-6/7V + 9-66/9VV + 1ml 5-6/5V + 1ml 9 Neutral
Developer: 7 Vol. Lotion



@JESSPURMALDESIGNS

Global: 20ml 10-12/10AI + 1ml 0-66/0VV + 40ml clear
Developer: 7 Vol. Lotion



WHAT IS YOUR FAV WAY TO USE CALURA GLOSS?

"Outside of balancing blondes I love adding a clear gloss onto a haircut or blow dry appointment for added shine and hydration!"

WHAT IS YOUR FAV CALURA GLOSS SHADE?

"10-36/10GV"

WHAT IS YOUR FLAVOUR OF THE MONTH FORMULA?

"Fav formula has to be 3/4 10-6/10V + 1/4 10-36/10GV for bright summer blonds!"

- Jessica Pormal



@JESSPURMALDESIGNS

Zone 1: 30ml 8-34/8GK + 30ml 7-4/7K
Global: 100ml 9-3/9G + 10ml 0-44/0KK
+ 10ml 0-33/0GG
Developer: 7 Vol. Lotion

**@ITSMRJLADNER**

Global: (Front Panel) 30ml 8-51/8RA Back Panel) 8-46/8KV
Developer: 7 Vol. Lotion

**@COLOUR.JADE**

Zone 1: 10ml 7 Neutral + 20ml 7-1/7A
Global: 5ml 7-6/7V + 20ml 9-66/9VV + 1ml 5-6/5V
+ 1ml 9 Neutral
Developer: 7 Vol. Lotion



@JC_HAIROLOGIST



@WILDHIVEHAIR



@THEUNORTHODOXSTYLIST

TRENDING: OLD MONEY

Capture the timeless elegance and sophistication of Old Money. These classic, refined shades exude luxury and grace.

**@THEUNORTHODOXSTYLIST**

Global: 15ml 9-32/9GI + 15ml 10 Neutral

Developer: 7 Vol. Lotion

**@LUXBLONDESBYMARISSA_**

Global: 20ml 9-6/9V + 10ml 9 Neutral + 10ml 9-36/9GV

Lowlight: 10ml 6-32/6GI + 5ml 6-34/6GK + 15ml 7 Neutral

Developer: 7 Vol. Lotion

**@WILDHIVEHAIR**

Zone 1: 20ml 8 Neutral + 20ml 8 Neutral Brown + 10ml 8-13/8AG
+ 10ml 7-13/9AG

Global: 9-32/9GI

Developer: 7 Vol. Lotion



@JADEBEAUTYCO

Zone 1: 7 Neutral

Global: 30ml 9-32/9GI + 30ml 10Neutral Brown

Developer: 7 Vol. Lotion



@JADEBEAUTYCO

Zone 1: 15ml 9 Neutral + 15ml 9-12/9AI

Global: 30ml Clear + 30ml 10-6/10V

Developer: 7 Vol. Lotion

WHAT IS YOUR FAV WAY TO USE CALURA GLOSS?

"I absolutely love using Calura Gloss to drop dimension back into my blondes who have gotten too solid. It is pigmented enough to give dimension but sheer enough to make it look soft and natural."

WHAT IS YOUR FAV CALURA GLOSS SHADE?

"I find myself always reaching for the 9-32/9GI because it's the perfect balance of warm and cool."

WHAT IS YOUR FLAVOUR OF THE MONTH FORMULA?

"Butter Pecan 10 Neutral Brown + 9-32/9GI"

— Morgan Thomas

**@ALI_THEARTIST**

Zone 1: 20ml 6 Neutral + 10ml 7-12/7AI

Zone 2: Face frame 30ml 10 Neutral Brown + 3ml 8-4/8K

Developer: 7 Vol. Lotion

**@JC_HAIROLOGIST**

Global: 40ml 10-36/10GV + 10ml clear

Developer: 7 Vol. Lotion

**@HAIRBYMEGANPEREZ**

Global: 20ml 8-34/8GK + 10ml 9 Neutral
Developer: 7 Vol. Lotion

**@HAIRBYMEGANPEREZ**

Global: 15ml 9-6/9V + 25ml 10-36/10GV
Developer: 7 Vol. Lotion

**@NICEHAIRBYRO**

Zone 1: 15ml 5 Neutral + 15ml 6 Neutral + 15ml 7-66/7VV
Global: 15ml 9-32/9GI + 15ml 9 Neutral + 15ml 9-6/9V
Developer: 7 Vol. Lotion



@EMMANUELLSTYLEZ



@CLAUDIAPAGEARTISTECOIFFEUSE

TRENDING: EXPENSIVE BRUNETTES

Elevate your look with the rich, opulent tones of Expensive Brunettes. These shades are designed to add depth and a high-end, polished finish.

**@EMMANUELLSTYLEZ**

Global: 15ml 8 Neutral brown + 15ml 8-32/8GI + 15ml 8-34/8GK
Developer: 7 Vol. Lotion

**@CLAUDIAPAGEARTISTECOIFFEUSE**

Global: 20ml 7 Neutral Brown + 10ml 7-3/7G + 10ml 8-34/8GK
Developer: 7 Vol. Cream

**@JADEPOZO**

10ml 10-6/10V + 10ml 10-12/10AI

**@THECUTTINGROOMSALON306**

15ml 10-12/10AI + 30ml 9-36/9GV

**@KICKCASSHAIR**

30ml 10-36/10GV + 15ml 10-6/10V + 10ml 10 Neutral

**@CLAUDIAPAGEARTISTECOIFFEUSE**

15ml 7 Neutral + 15ml 8-1/8A

**@HAIRBYMEGANPEREZ**

6 Neutral Brown

**@HAIRBYMEGANPEREZ**

20ml 8 Neutral + 20ml 9 Neutral

**@HAIRBYMEGANPEREZ**

30ml 7 Neutral + 10ml 7-5/7R + 10ml 7-66/7VV

**@HAIRBYMEGANPEREZ**

30ml 8-34/8GK + 10ml Clear

**@HAIRBYMEGANPEREZ**

8-43/8KG



FEATURED ARTISTS GLOSSARY



JLADNER
@ITSMRJLADNER



REBECCA TAYLOR
@REBECCATAYLORHAIR



MISAEAL APONTE
@MISAEALAPONTEART



MORGAN THOMAS
@JADEBEAUTYCO



JUAN TORRES
@JUAHNN



MEGAN PEREZ
@HAIRBYMEGANPEREZ



CLAUDIA PAGÉ
@CLAUDIAPAGEARTISTECOIFFEUSE



JESSICA PURMAL
@JESSPURMALDESIGNS



ATALAYA FIGUEROA
@HAIRBYABLONDE



ALLISON MONCHECK
@THEUNORTHODOXSTYLIST

TESTIMONIALS

ASHLEY THOMAS

SIX TEN SALON, OWNER.

WIND GAP, PA, USA

"I love oligo gloss because it is so versatile. As a salon owner, I love being able to have a gloss option that can be used for multiple purposes. Because it is acidic with an alkaline buffer, we have the ability to get a sheer glaze effect and a gloss that can pack a punch with less transparency. The high shine it gives the hair is unmatched. We also love the range of colors it's offered in.

We chose it because we already were using Calura color, Funkhue and the lightening system. When they launched the gloss we knew we absolutely wanted to use it to compliment their already stellar color line. Everything with oligo is always works so well and has incredible quality."

** Six Ten Salon was just named one of the top 200 salons in the country!*

SHANON GIANG

FIKA BEAUTY, OWNER.

KANATA ON, CAN

"At Fika Beauty, we love using Oligo Calura gloss! It's awesome to support a Canadian brand that's all about quality and innovation. The line's versatility lets our team get super creative - we have fun creating unique formulas that our clients love but also can trust the beauty of each individual shade, 10-36 is a game changer!

As the owner, I really appreciate the excellent education Oligo provides. It keeps us knowledgeable and always ahead of the trends for our guests!"

** Diamond Oligo Pro Salon*

TESTIMONIALS

JEN COLLOTON-EBERWEIN

CRIMSON HAIR STUDIO & CRIMSON EAST, OWNER.

PHILADELPHIA, PA & HADDONFIELD, NJ, USA

"I used shades eq for 25 years and over the years they have introduced so many new shades and unfortunately we ran out of room in our color area. My sales rep has been telling me how amazing gloss was so I tried some samples and was blown away by the shine!

I love the pure tones, it's a true colorist line!! The hair feels amazing and the longevity is superior!!! As a salon owner the price, quality, and education and support from Karen has made this transition the easiest of any color line switch of mine over the years!!"

ASHLEY LANDRY

BUFFALO CO. SALON AND BARBER, OWNER.

COLUMBIA, TN, USA

"I chose Calura Gloss because it does what it's supposed to do, there's so much versatility in using it. I do a lot of brunettes and color corrections, so everything with those two services involves using the color wheel and with Calura Gloss, I don't have to worry about my colors browning out. It also fades true to tone and is long lasting. I love the short processing time and longevity. And it smells delicious!"

JAMIE NELSON

EMBER BEAUTY AND BODY, OWNER.

BOULDER, CO, USA

"From the very first application, it was crystal clear that this was not just any color line... it was the embodiment of brilliance and vitality. The colors perform exactly as described, transforming every strand into a symphony of hues that excite and inspire."